

FAXPHONE B640

BUBBLE JET FACSIMILE

PARTS

CATALOG

REVISION 0

[FAXPHONE B640	H12-1632	120V	CCSI]
[FAXPHONE B640	H12-1642	120V	CND/LTN]

Canon

MAY 1999

HY8-39AK-000

Application

This manual has been issued by Canon Inc. for qualified persons to learn technical theory, installation, maintenance, and repair of products. This manual covers all localities where the products are sold. For this reason, there may be information in this manual that does not apply to your locality.

Corrections

This manual may contain technical inaccuracies or typographical errors due to improvements or changes in products. When changes occur in applicable products or in the content of this manual, Canon will release technical information as the need arises. In the event of major changes in the contents of this manual over a long or short period, Canon will issue a new editions of this manual.

The following paragraph does not apply to any countries where such provisions are inconsistent with local law.

Trademarks

The product names and company names described in this manual are the registered trademarks of the individual companies.

Copyright

This manual is copyrighted with all rights reserved. Under the copyright laws, this manual may not be copied, reproduced or translated into another language, in whole or in part, without the written consent of Canon Inc.

Copyright © 1999 by Canon Inc.

CANON INC.

Office Imaging Products Technical Support Dept. 3

5-1 Hakusan 7-Chome, Toride-city, Ibaraki 302-8501, Japan

DTP System

The data contained on this manual were created using Apple Macintosh® computers.

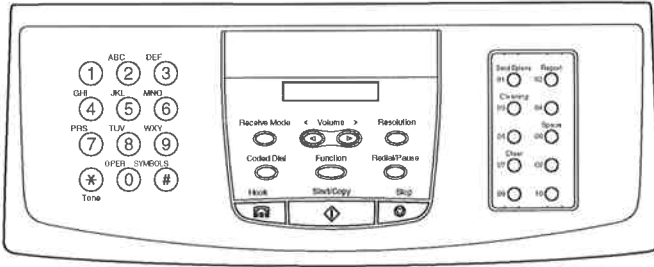
Document creation and page layout were performed using Adobe® PageMaker® 6.5J.

Logos and illustrations were created using Macromedia® FreeHand 8.0J.

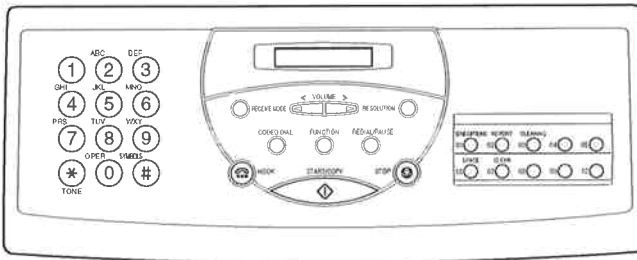
FOREWORD

There are two types in FAXPHONE B640, and differ according to the applicable Parts Catalog. When servicing, refer to the relevant Parts Catalog after determining which type, a) or b), from the products listed below.

Type a) ... FAXPHONE B640 PARTS CATALOG (Part No. HY8-39AK-000)



Type b) ... FAXPHONE B640 PARTS CATALOG (Part No. HY8-39AD-000)



I. CONTENTS

1. ILLUSTRATION INDEX
2. PARTS LAYOUT & PARTS LIST
3. TOOL
4. LUBRICATIONS
5. GUIDE TO REPLACEMENT
6. NUMERICAL INDEX

II. ABOUT THIS MANUAL

1. ILLUSTRATION INDEX

For illustration index, the parts layout illustrations in this parts catalog are listed in abbreviated form in order of illustration number to identify the pages they appear on. To find an illustration of a part, see the ILLUSTRATION INDEX.

2. PARTS LAYOUT & PARTS LIST

Parts layout illustration

a) Parts search

Find a part from the parts layout illustration and find its key number from the parts list to identify the part number and name.

Further, screws, nuts, washers, grip rings, pins and spacers are mentioned in the parts list.

Note: If parts have the same or similar shape but different specifications, their key number is assigned to several part numbers and names in the parts list.

b) Parts replacement procedure

The parts layout illustrations are arranged according to the disassembly procedure of the product.

When a unit in the illustration can be disassemble further, a reference illustration page of the disassembly will be included.

Parts where grease is to be applied are displayed as "Lubrication". When replacing parts, or if grease has accidentally been wiped off, refer to "4". (Lubrications), and reapply the grease.

The parts require carefully work are marked "See page 5-x". So refer to the corresponded page "5". (GUIDE TO REPLACEMENT).

The letters (A, B etc.) in the illustration indicate the connection locations of cables and screws.

Parts list

a) FIGURE & KEY No.

The FIGURE & KEY No. column corresponds to the key numbers assigned to the parts in the parts layout illustration.

It also corresponds to the part locations printed on the PC board.

b) PART NUMBER

The PART NUMBER column gives the part numbers corresponding to the key numbers. To order a part, indicate the part number clearly.

Note: Parts marked NPN are not service parts.

c) RANK

The service parts with N in the RANK column are order parts.

d) QTY

The QTY column gives the number of parts in the corresponding components layout illustration.

e) DESCRIPTION

The DESCRIPTION column gives the part names in English.

To order a part, indicate the part name, too.

3. TOOL

This is a list of tools used for servicing products.

4. LUBRICATIONS

Where grease is to be applied in order to allow moving parts to work smoothly, and to increase conductivity, the type and amount of grease to be used will be mentioned.

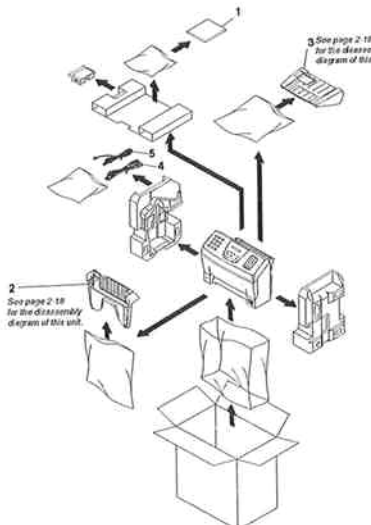
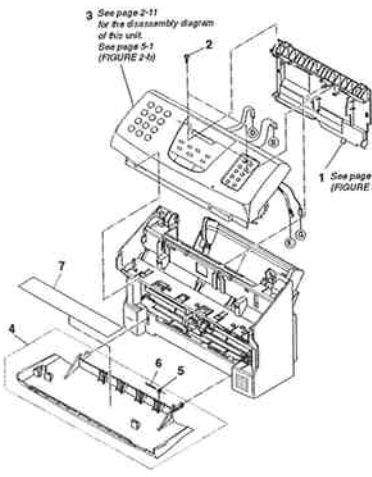
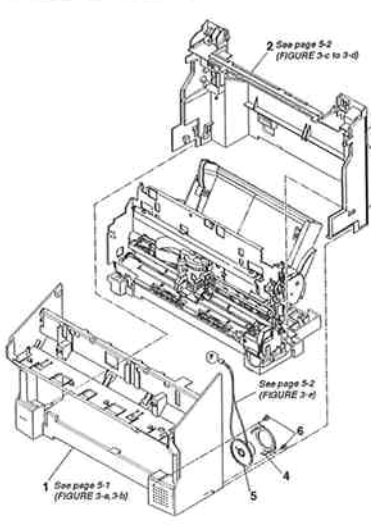
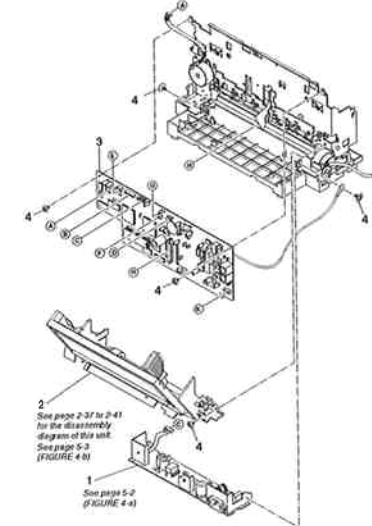
5. GUIDE TO REPLACEMENT

Explains the special cares and cautions for the parts replacement.

6. NUMERICAL INDEX

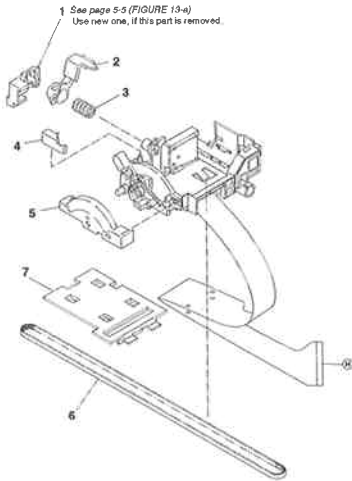
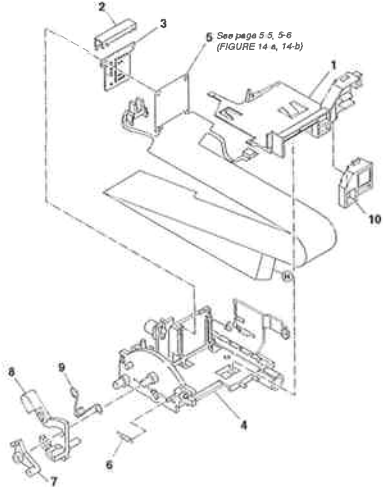
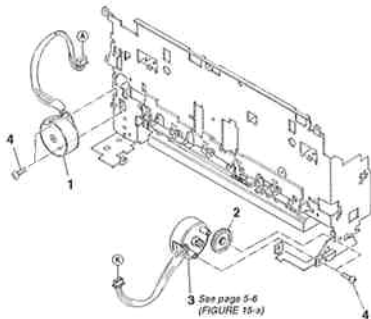
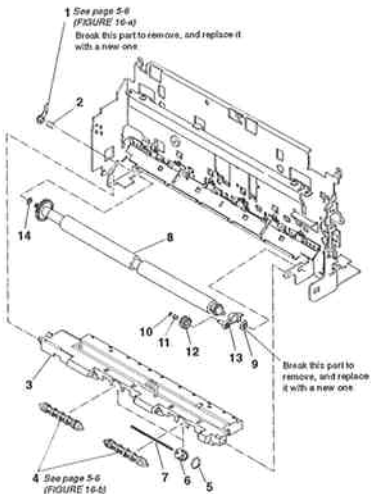
All the parts listed in this parts catalog are arranged in order of part number. You can identify part locations and names from the NUMERICAL INDEX.

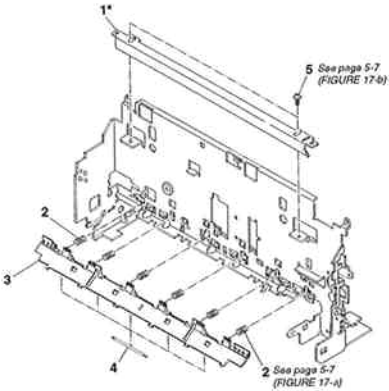
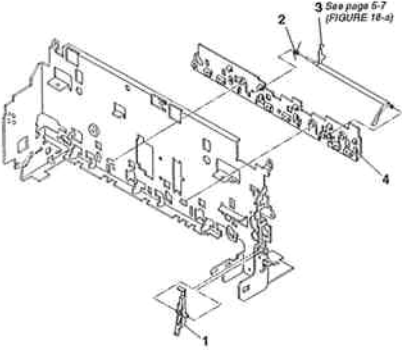
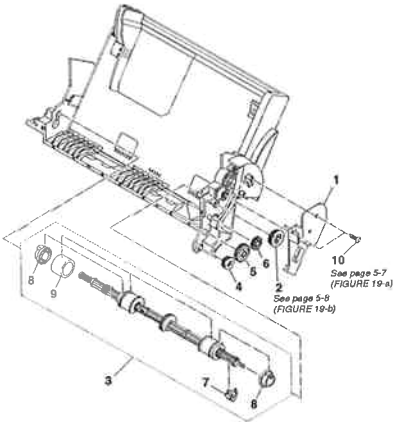
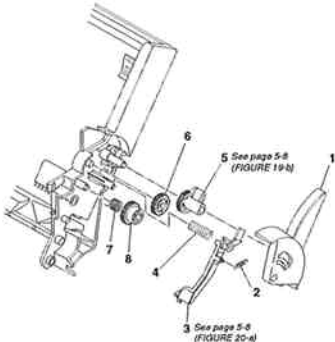
1. ILLUSTRATION INDEX

<p>FIGURE 1 FAXPHONE B640 PACKAGE CONTENTS</p>	<p>See Page 2-1</p>	<p>FIGURE 2 SCANNER UNIT & COVERS</p>	<p>See Page 2-3</p>
 <p>1 See page 2-18 for the assembly diagram of this unit.</p> <p>2 See page 2-18 for the assembly diagram of this unit.</p> <p>3 See page 2-18 for the assembly diagram of this unit.</p> <p>4 See page 2-18 for the assembly diagram of this unit.</p> <p>5 See page 2-18 for the assembly diagram of this unit.</p>	 <p>1 See page 5-1 (FIGURE 2-4)</p> <p>2 See page 2-11 for the disassembly diagram of this unit. See page 5-1 (FIGURE 2-4)</p> <p>3 See page 2-11 for the disassembly diagram of this unit. See page 5-1 (FIGURE 2-4)</p> <p>4 See page 5-1 (FIGURE 2-4)</p> <p>5 See page 5-1 (FIGURE 2-4)</p> <p>6 See page 5-1 (FIGURE 2-4)</p> <p>7 See page 5-1 (FIGURE 2-4)</p>		
<p>FIGURE 3 MAIN COVER & SPEAKER</p>	<p>See Page 2-5</p>	<p>FIGURE 4 POWER SUPPLY UNIT & ASF & SCNT BOARD ASS'Y</p>	<p>See Page 2-7</p>
 <p>1 See page 5-1 (FIGURE 3-4, 3-6)</p> <p>2 See page 5-2 (FIGURE 3-c to 3-d)</p> <p>3 See page 5-2 (FIGURE 3-e)</p> <p>4 See page 5-2 (FIGURE 3-e)</p> <p>5 See page 5-2 (FIGURE 3-e)</p> <p>6 See page 5-2 (FIGURE 3-e)</p>	 <p>1 See page 5-2 (FIGURE 4-a)</p> <p>2 See page 2-37 to 3-41 for the disassembly diagram of this unit. See page 5-2 (FIGURE 4-b)</p> <p>3 See page 5-2 (FIGURE 4-b)</p> <p>4 See page 5-2 (FIGURE 4-b)</p> <p>5 See page 5-2 (FIGURE 4-b)</p> <p>6 See page 5-2 (FIGURE 4-b)</p>		

<p>FIGURE 5 PRINTER ASS'Y & INK ABSORBER & LOWER COVER UNIT</p>	<p>See Page 2-9</p>	<p>FIGURE 6 OPERATION PANEL UNIT & SEPARATION GUIDE & SCANNER BASE UNIT</p>	<p>See Page 2-11</p>
<p>FIGURE 7 OPERATION PANEL ASS'Y</p>	<p>See Page 2-13</p>	<p>FIGURE 8 SEPARATION ROLLER ASS'Y & DOCUMENT FEED ROLLER ASS'Y</p>	<p>See Page 2-15</p>

<p>FIGURE 9 CONTACT SENSOR ASS'Y & SCANNER DRIVE ASS'Y</p>	<p>See Page 2-17</p>	<p>FIGURE 10 PAPER TRAY COVER & PAPER TRAY</p>	<p>See Page 2-19</p>			
			<p>FIGURE 11 DOCUMENT FEED MOTOR & SCANNER DRIVE GEARS</p>	<p>See Page 2-21</p>	<p>FIGURE 12 PURGE UNIT & CARRIAGE SECTION (1)</p>	<p>See Page 2-23</p>
		<p>* = Lubrication See page 4-1</p>				

<p>FIGURE 13 CARRIAGE SECTION (2)</p>	<p>See Page 2-25</p>	<p>FIGURE 14 CARRIAGE SECTION (3)</p>	<p>See Page 2-27</p>
			
<p>FIGURE 15 CARRIAGE MOTOR & PAPER FEED MOTOR</p>	<p>See Page 2-29</p>	<p>FIGURE 16 PAPER FEED SECTION (1)</p>	<p>See Page 2-31</p>
			

<p>FIGURE 17 PAPER FEED SECTION (2) & CARRIAGE GUIDE FRAME</p>	<p>See Page 2-33</p>	<p>FIGURE 18 PRINTER FRAME</p>	<p>See Page 2-35</p>
 <p>* = Lubrication See page 4-1</p>	 <p>3 See page 6-7 (FIGURE 18-a)</p>		
<p>FIGURE 19 AUTO SHEET FEEDER (1)</p>	<p>See Page 2-37</p>	<p>FIGURE 20 AUTO SHEET FEEDER (2)</p>	<p>See Page 2-39</p>
 <p>10 See page 5-7 (FIGURE 19-a) See page 5-8 (FIGURE 19-b)</p>	 <p>5 See page 5-8 (FIGURE 19-b) 3 See page 5-8 (FIGURE 20-a)</p>		

<p>FIGURE 21 AUTO SHEET FEEDER (3)</p>	<p>See Page 2-41</p>	<p>FIGURE 22 SCNT BOARD ASS'Y</p>	<p>See Page 2-43</p>
<p>FIGURE 23 TOOLS</p>	<p>See Page 3-1</p>		

2. PARTS LAYOUT & PARTS LIST

FIGURE 1 FAXPHONE B640 PACKAGE CONTENTS

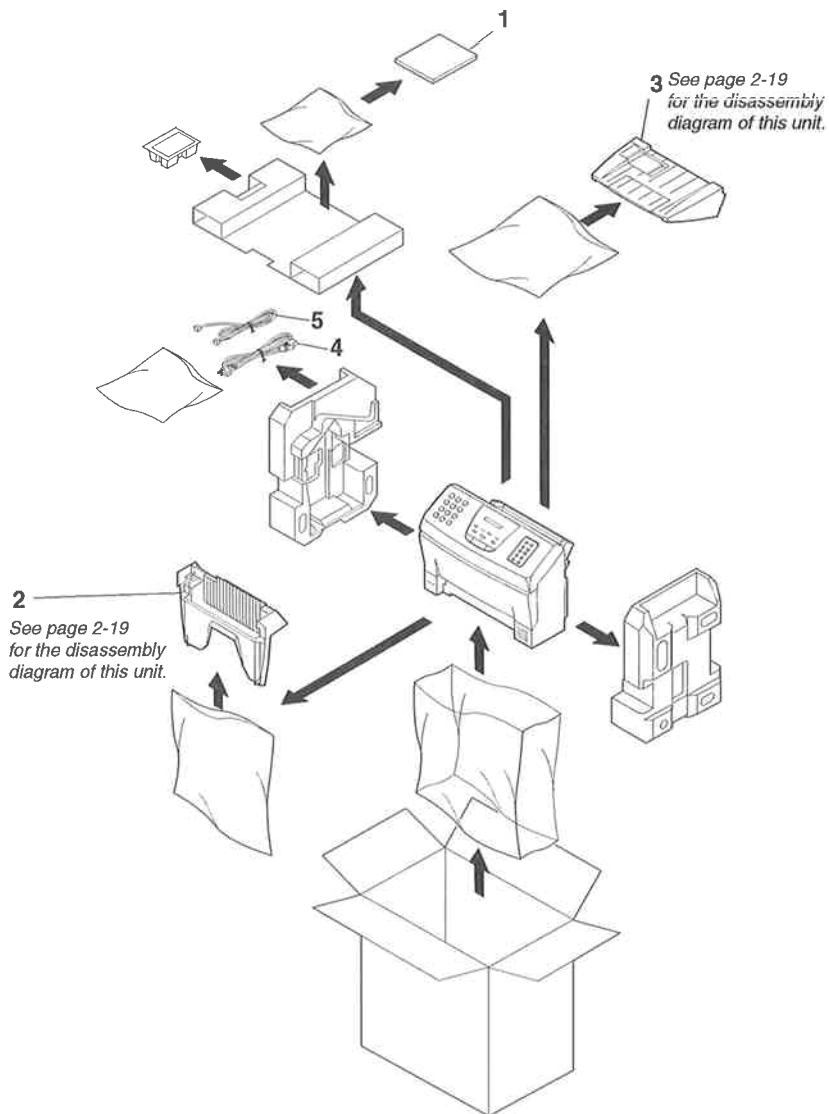


FIGURE 2 SCANNER UNIT & COVERS

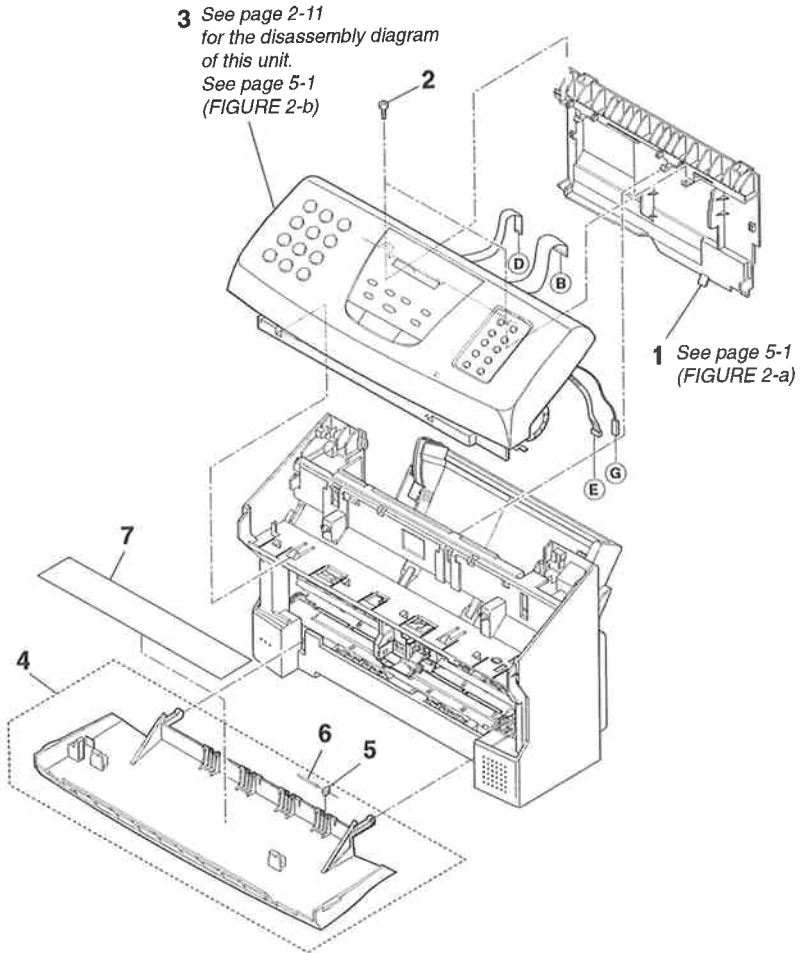
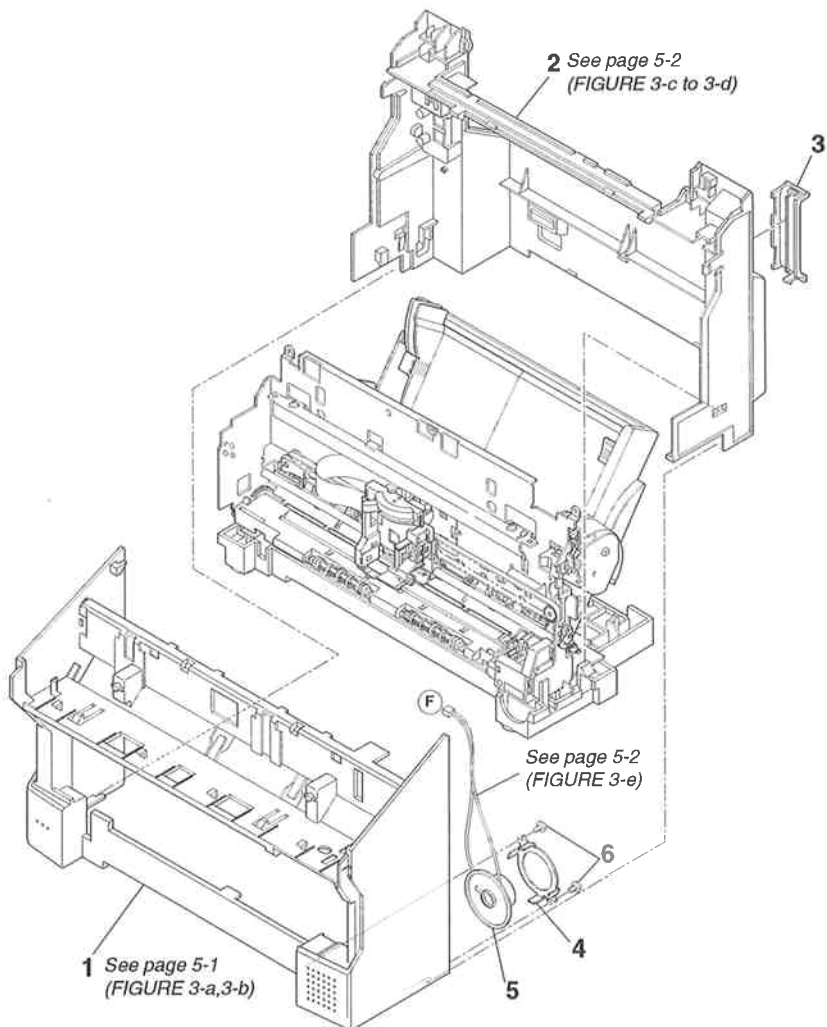


FIGURE 3 MAIN COVER & SPEAKER



**FIGURE 4 POWER SUPPLY UNIT & ASF
& SCNT BOARD ASS'Y**

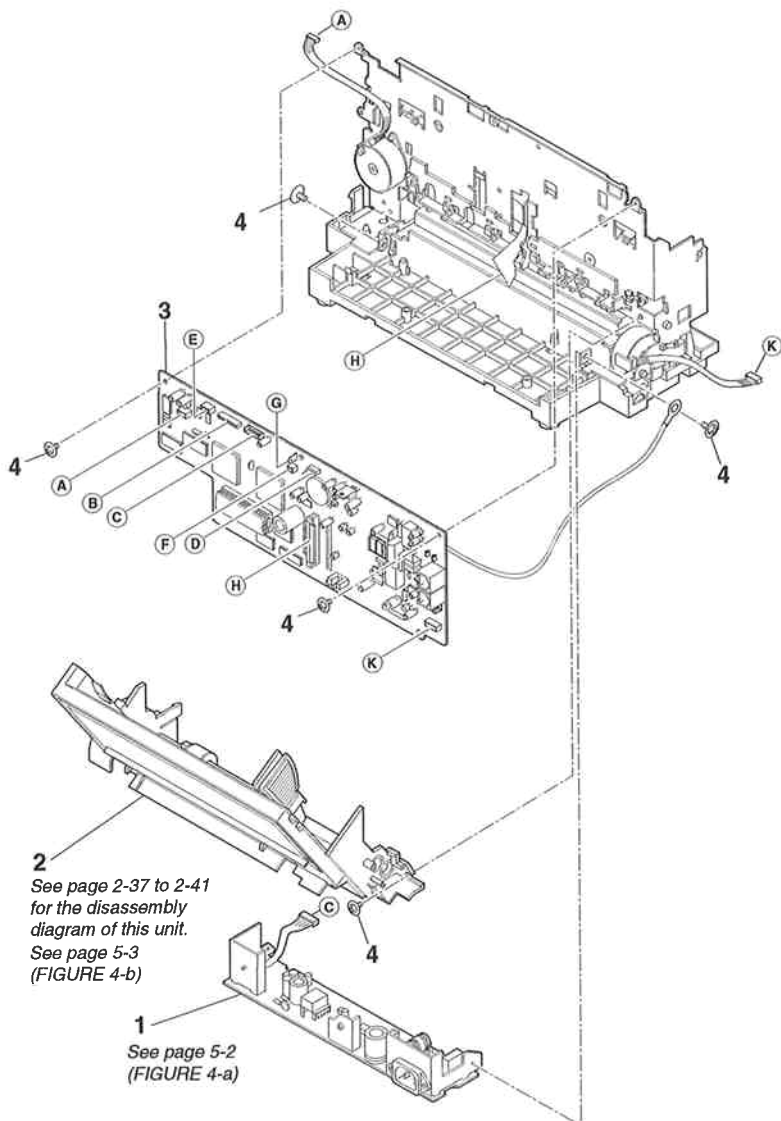


FIGURE 5 PRINTER ASS'Y & INK ABSORBER & LOWER COVER UNIT

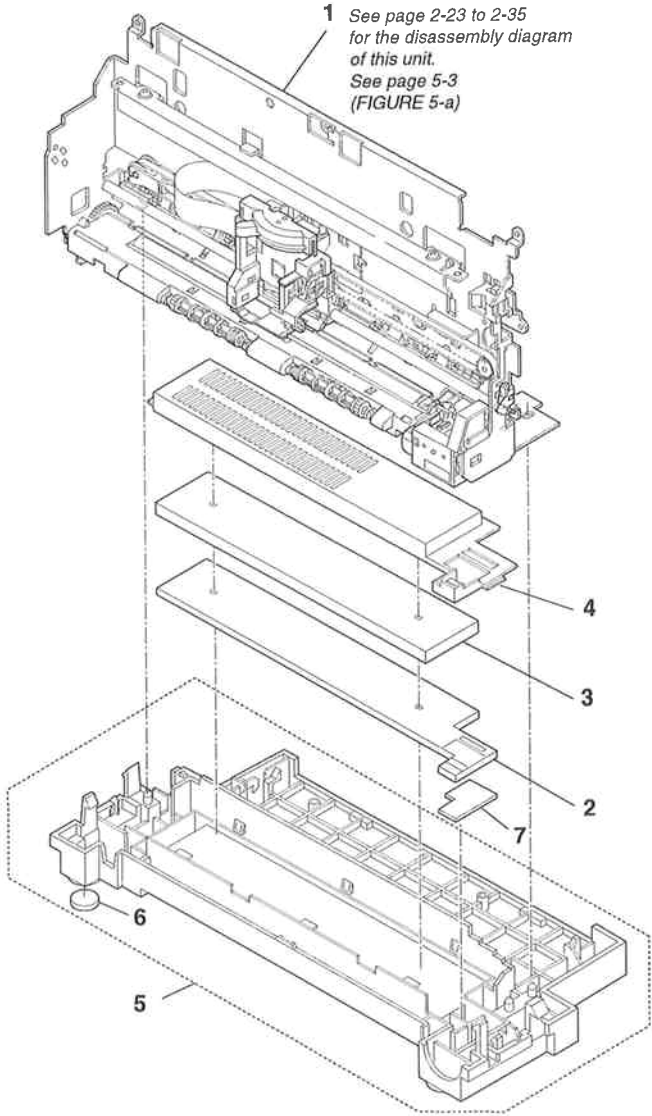


FIGURE 6 OPERATION PANEL UNIT & SEPARATION GUIDE & SCANNER BASE UNIT

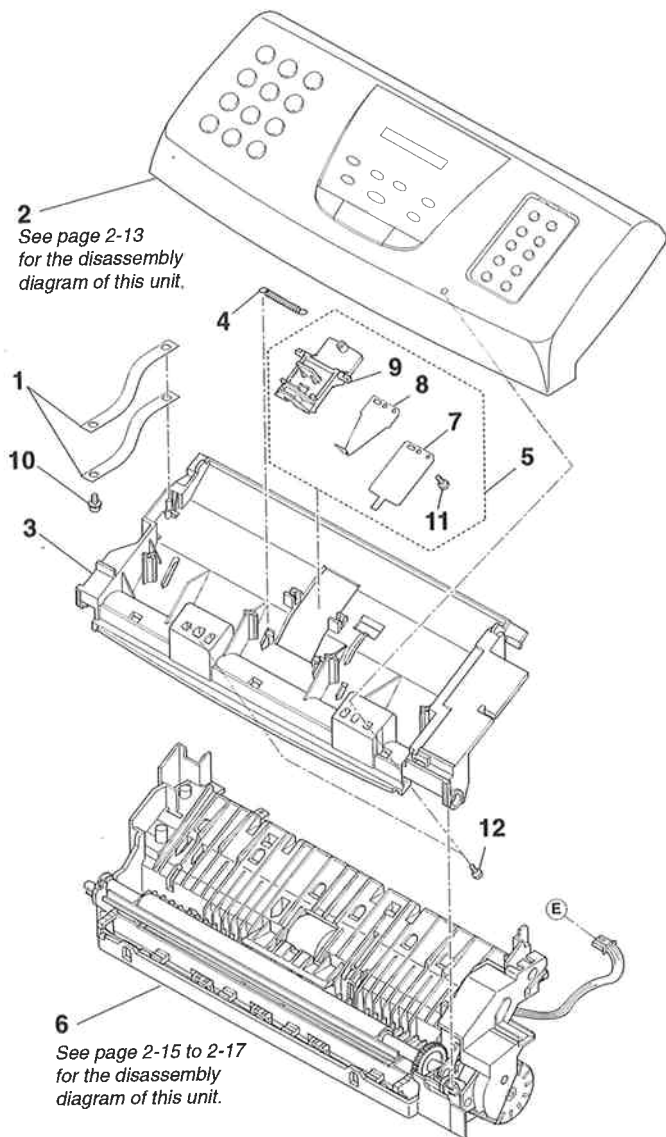
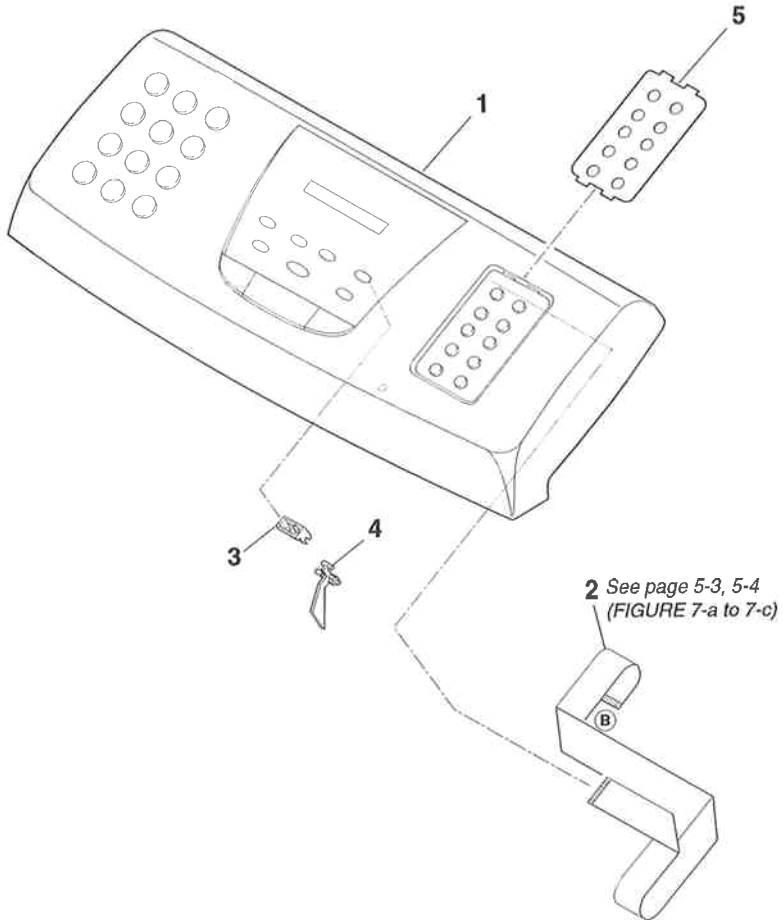
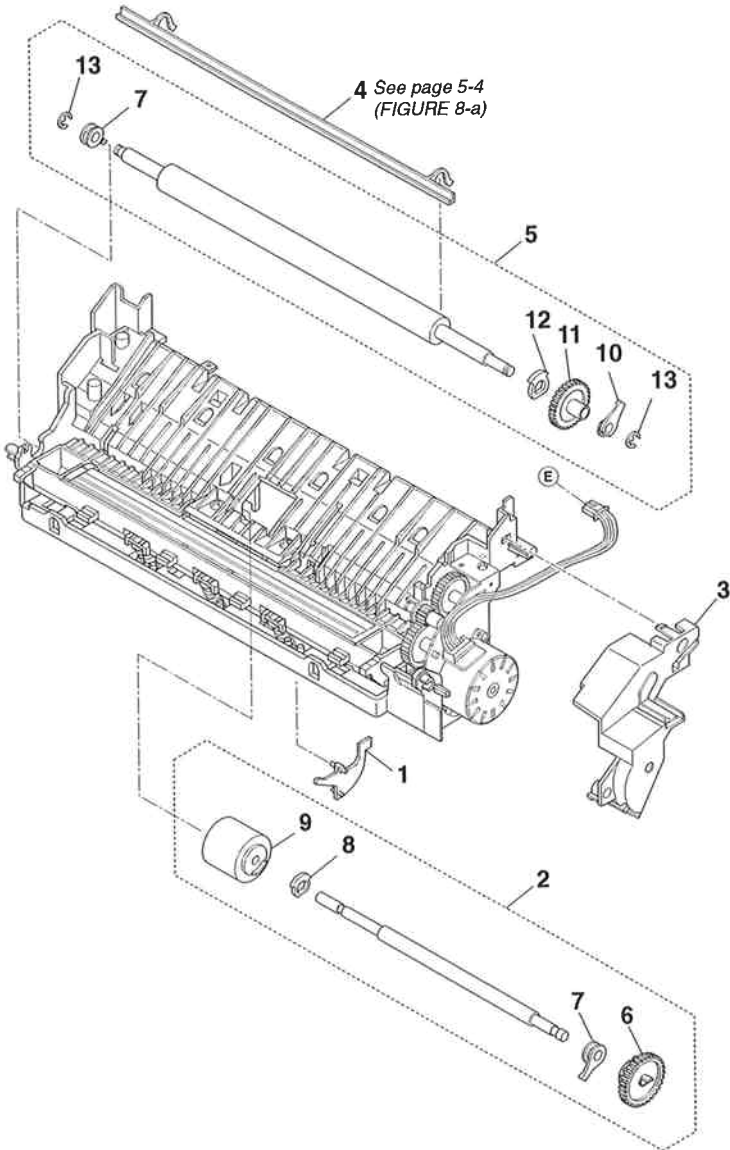


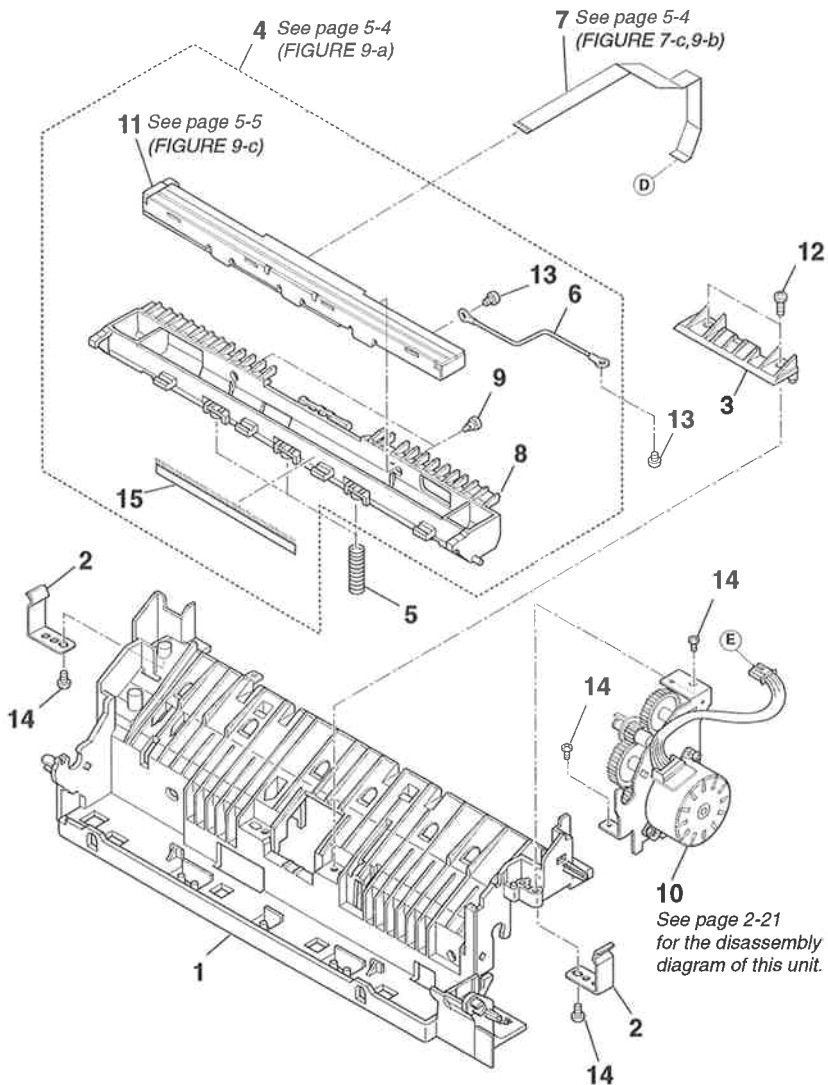
FIGURE 7 OPERATION PANEL ASS'Y



**FIGURE 8 SEPARATION ROLLER ASS'Y
& DOCUMENT FEED ROLLER ASS'Y**



**FIGURE 9 CONTACT SENSOR ASS'Y
& SCANNER DRIVE ASS'Y**

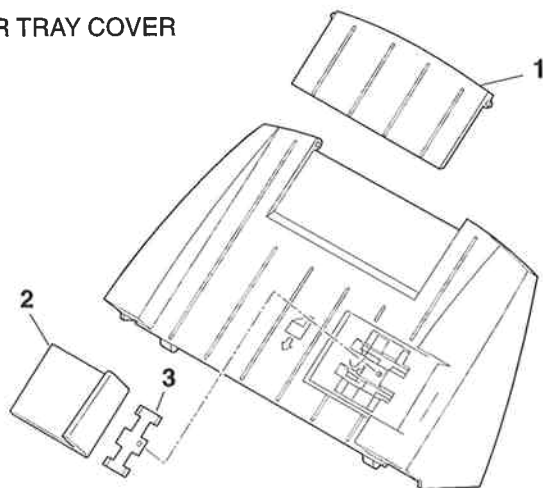


FAXPHONE B640 2.PARTS LAYOUT & PARTS LIST

FIGURE & KEY No.	PART No.	R A N K	Q T Y	DESCRIPTION	REMARKS
9 - 1	HB1-1206-060	N	1	COVER, DOCUMENT GUIDE, LOWER	
2	HB1-1208-000		2	SPRING, LEAF	
3	HB1-1205-000		1	PLATE, POSITIONING, CS HOLDER	
4	NPN		1	CONTACT SENSOR ASS'Y	
5	HS5-2117-000		3	SPRING, COIL	
6	HH2-2494-000		1	WIRE, GROUNDING	
7	HH2-2450-000		1	FLAT CABLE	
8	HB1-1212-040		1	HOLDER, CONTACT SENSOR	
9	HS5-9005-000		2	SCREW, M2.6X3.5	
10	NPN		1	SCANNER DRIVE ASS'Y	
11	HH7-2092-000		1	CONTACT SENSOR UNIT	
12	XB4-7301-009		2	SCREW, BINDING HEAD M3X10	
13	XB1-2300-407		2	SCREW, BH3X4 (S)	
14	XB4-7300-807		4	SCREW, TAP TIGHT, BINDING HEAD	
15	HB1-2817-000		1	ELIMINATOR, STATIC-CHARGE	

FIGURE 10 PAPER TRAY COVER & PAPER TRAY

PAPER TRAY COVER



PAPER TRAY

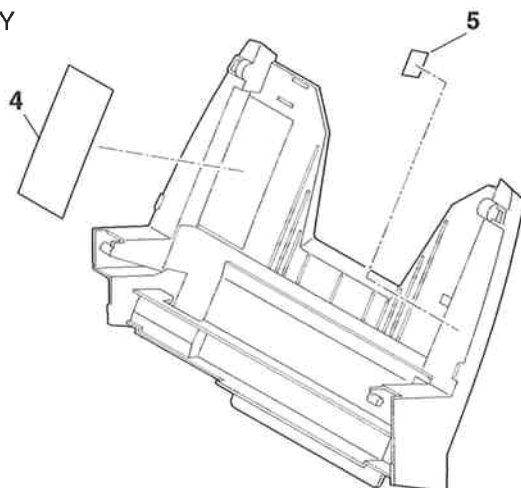


FIGURE 11 DOCUMENT FEED MOTOR
& SCANNER DRIVE GEARS

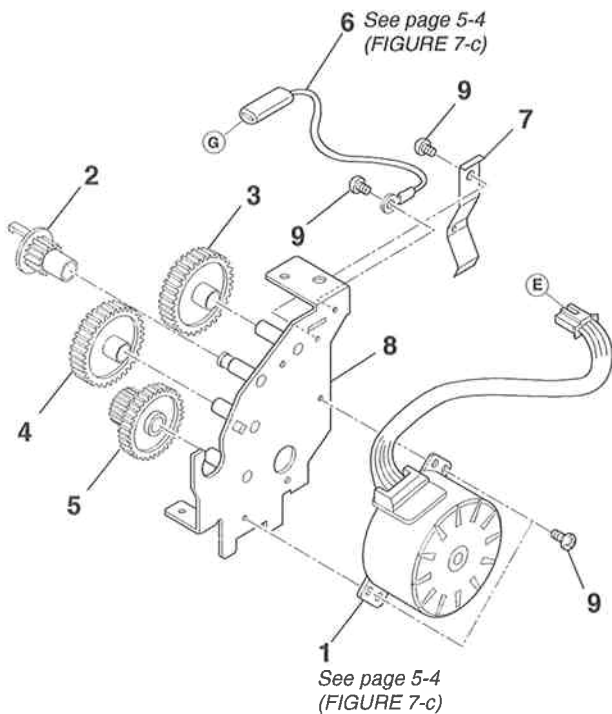
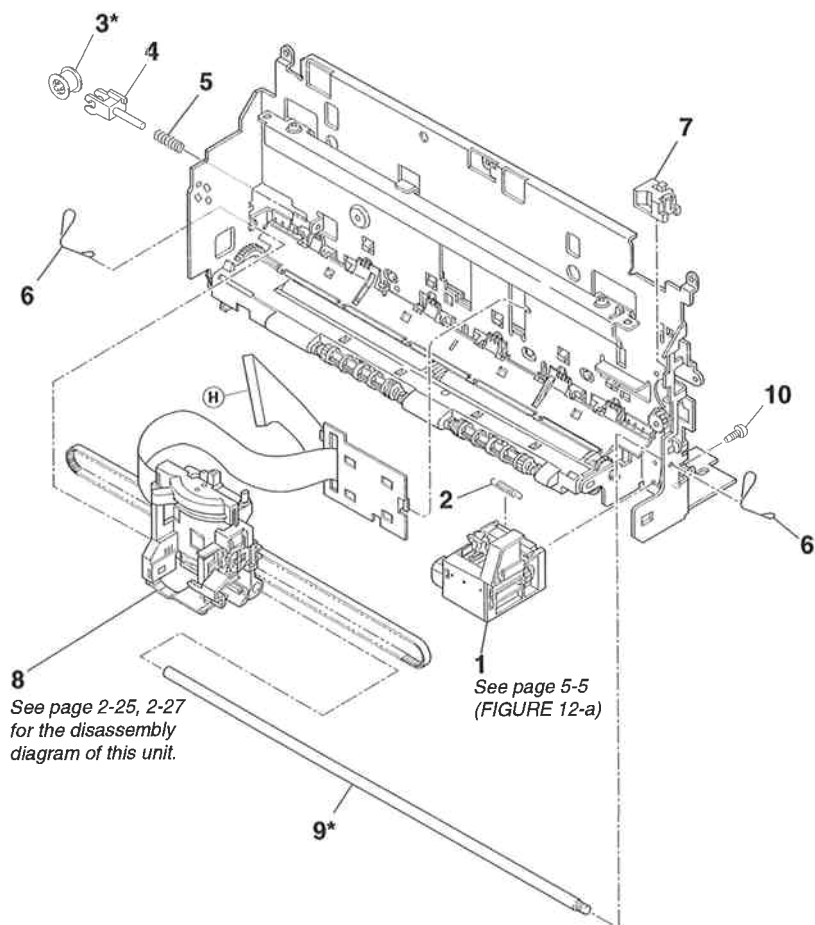


FIGURE 12 PURGE UNIT & CARRIAGE SECTION (1)



* = Lubrication
See page 4-1

FIGURE 13 CARRIAGE SECTION (2)

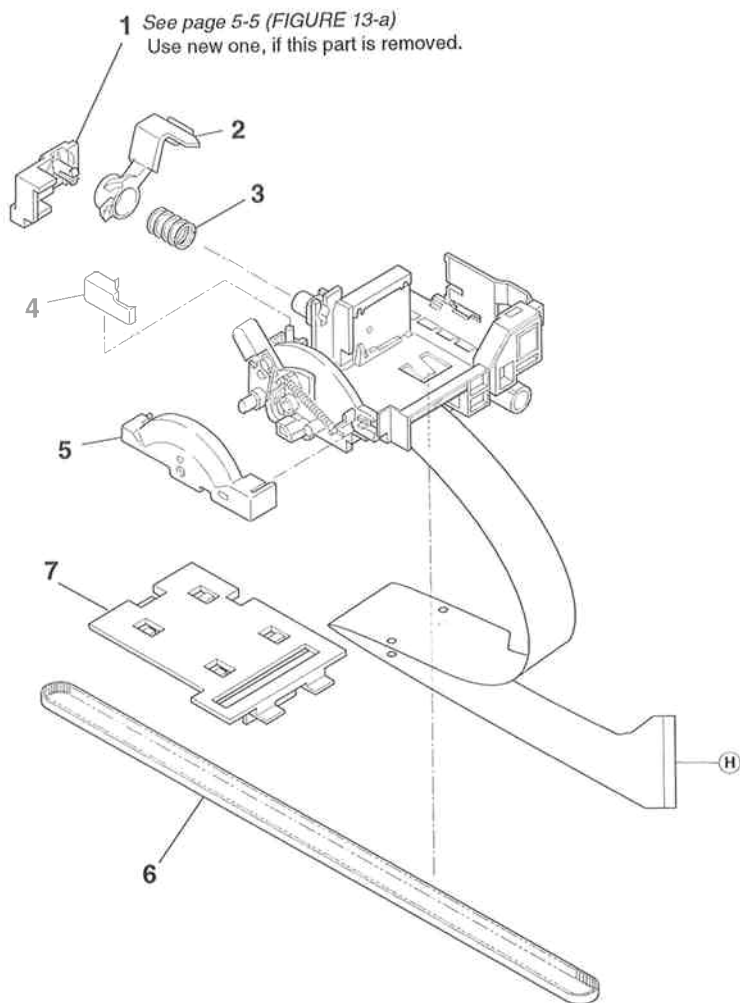


FIGURE 14 CARRIAGE SECTION (3)

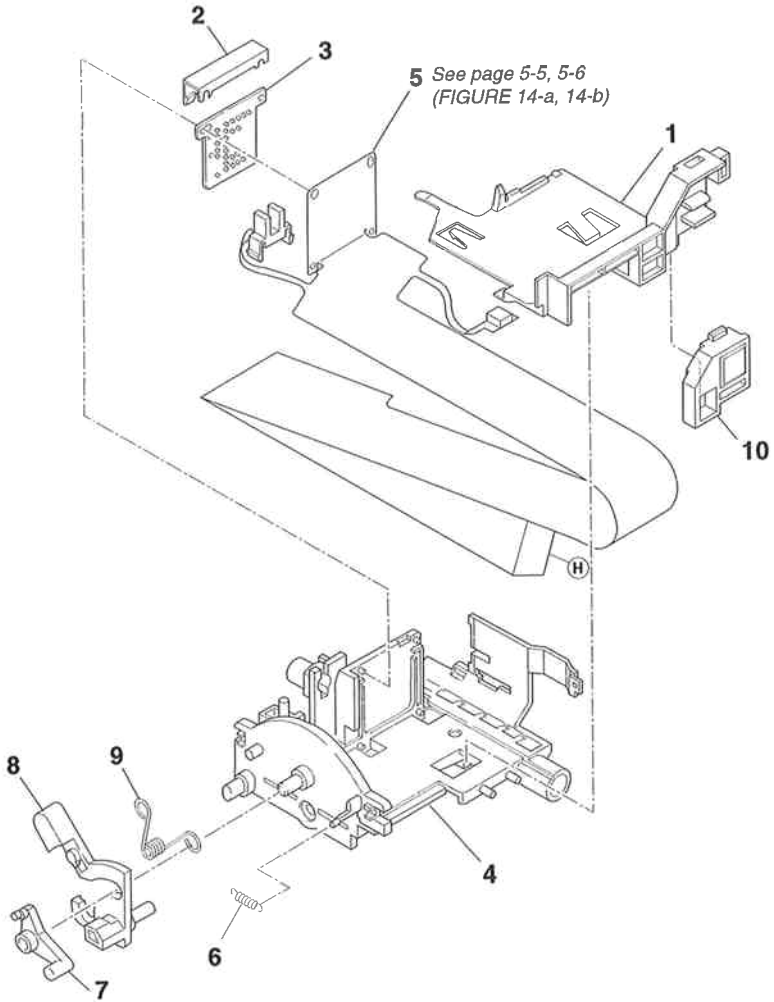


FIGURE 15 CARRIAGE MOTOR & PAPER FEED MOTOR

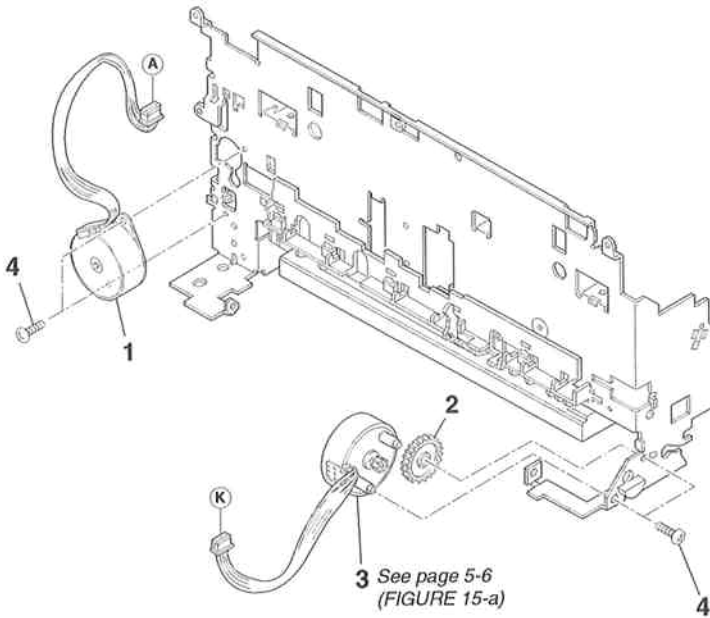
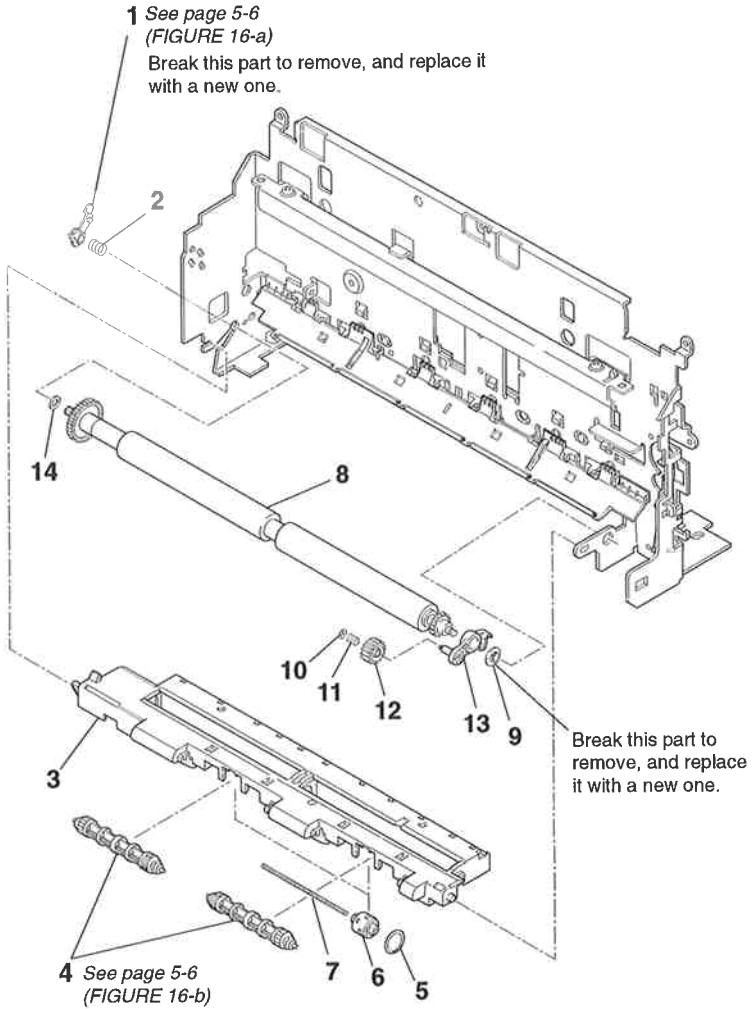


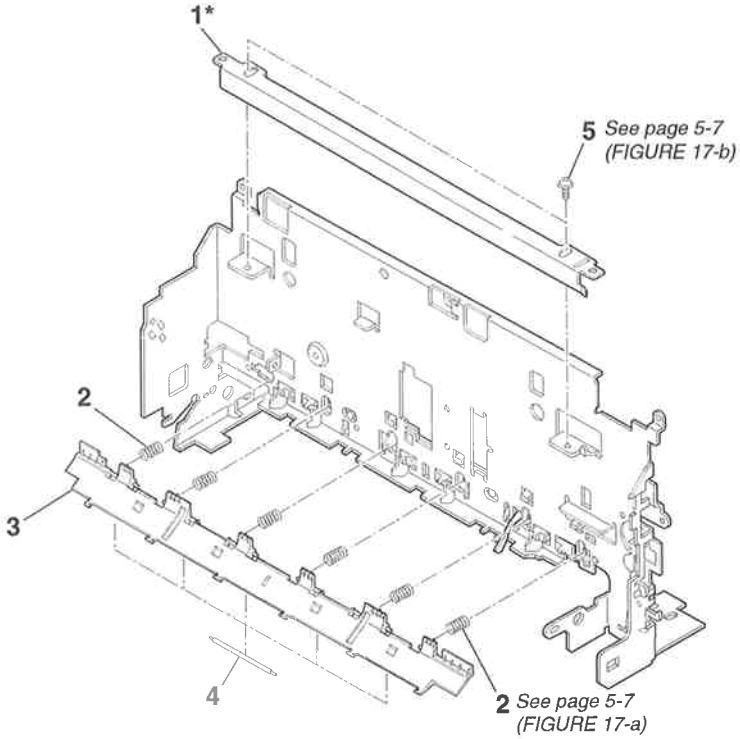
FIGURE 16 PAPER FEED SECTION (1)



FAXPHONE B640 2.PARTS LAYOUT & PARTS LIST

FIGURE & KEY No.	PART No.	R A N K	Q T Y	DESCRIPTION	REMARKS
16- 1	QB1-0417-000		1	BUSHING	
2	QB1-0423-000		1	SPRING, COIL	
3	HB1-1242-000		1	PLATEN	
4	HG5-0433-000		2	PAPER EJECT ROLLER ASS'Y	
5	QB1-0429-030		2	RING, RUBBER	
6	QB1-0428-000		2	ROLLER, TRANSMISSION	
7	QB1-0419-000		2	SHAFT, ROLLER	
8	HF5-0106-000		1	ROLLER, PAPER FEED	
9	QB1-0422-000		1	BUSHING	
10	XA9-0613-000		1	NUT, SUS	
11	QB1-0421-000		1	SPRING, COIL	
12	QB1-0425-000		1	GEAR, TRANSMISSION	
13	QB1-0420-000		1	ARM, TRANSMISSION	
14	QB1-0622-000		1	WASHER, PLAIN	

FIGURE 17 PAPER FEED SECTION (2)
& CARRIAGE GUIDE FRAME



* = Lubrication
See page 4-1

FIGURE 18 PRINTER FRAME

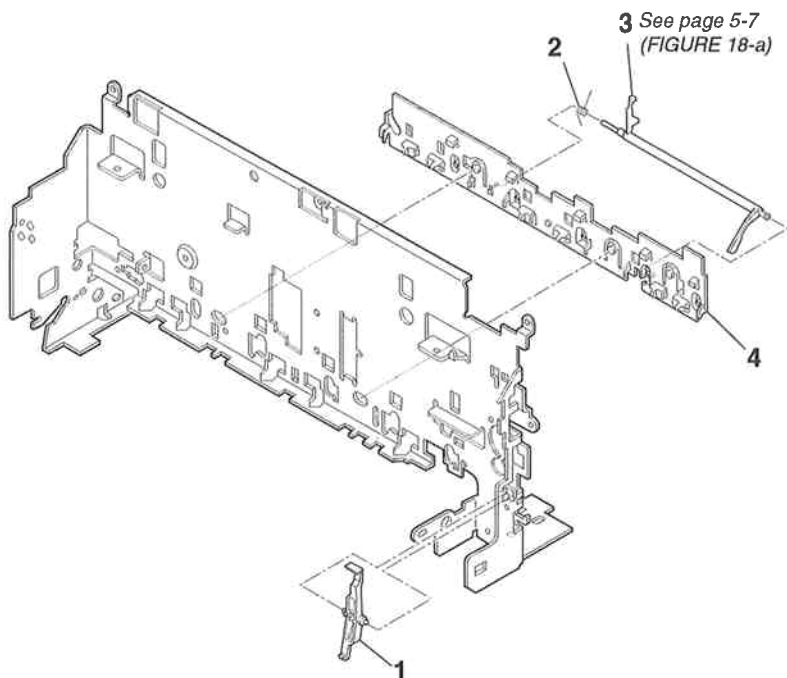


FIGURE 19 AUTO SHEET FEEDER (1)

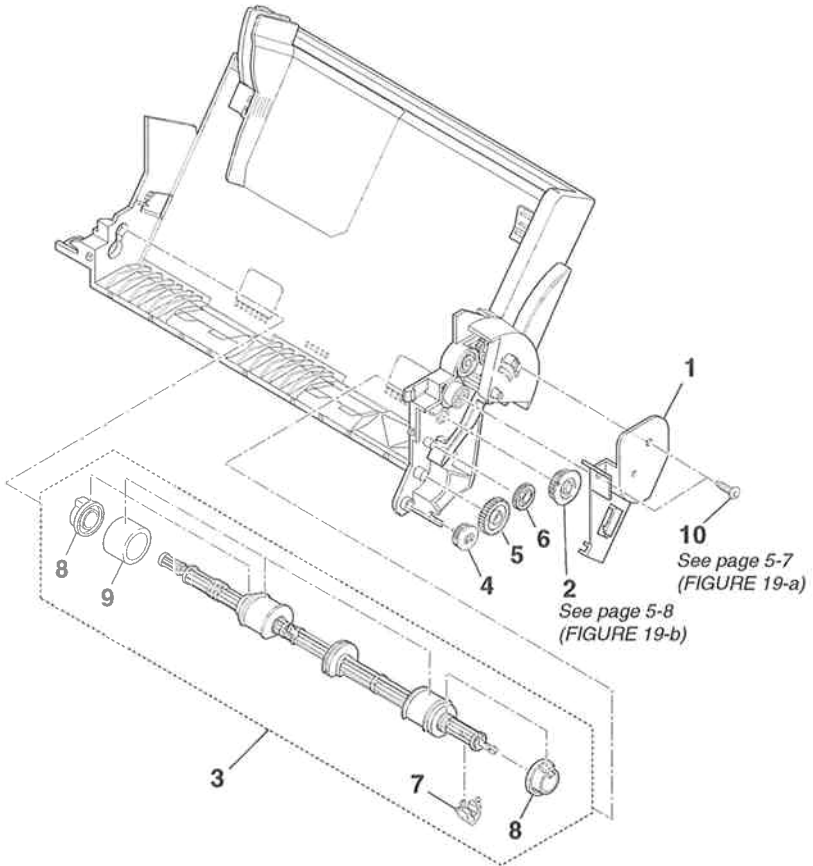


FIGURE 20 AUTO SHEET FEEDER (2)

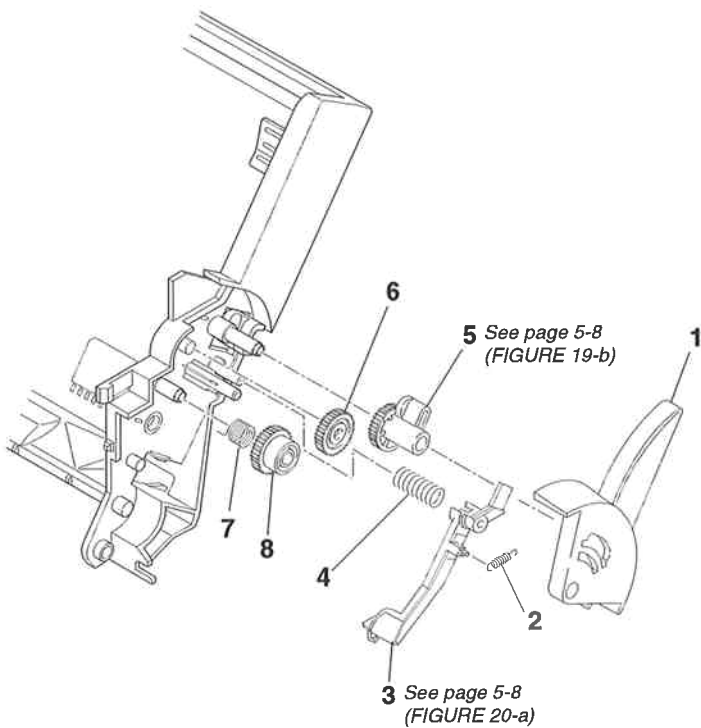


FIGURE 21 AUTO SHEET FEEDER (3)

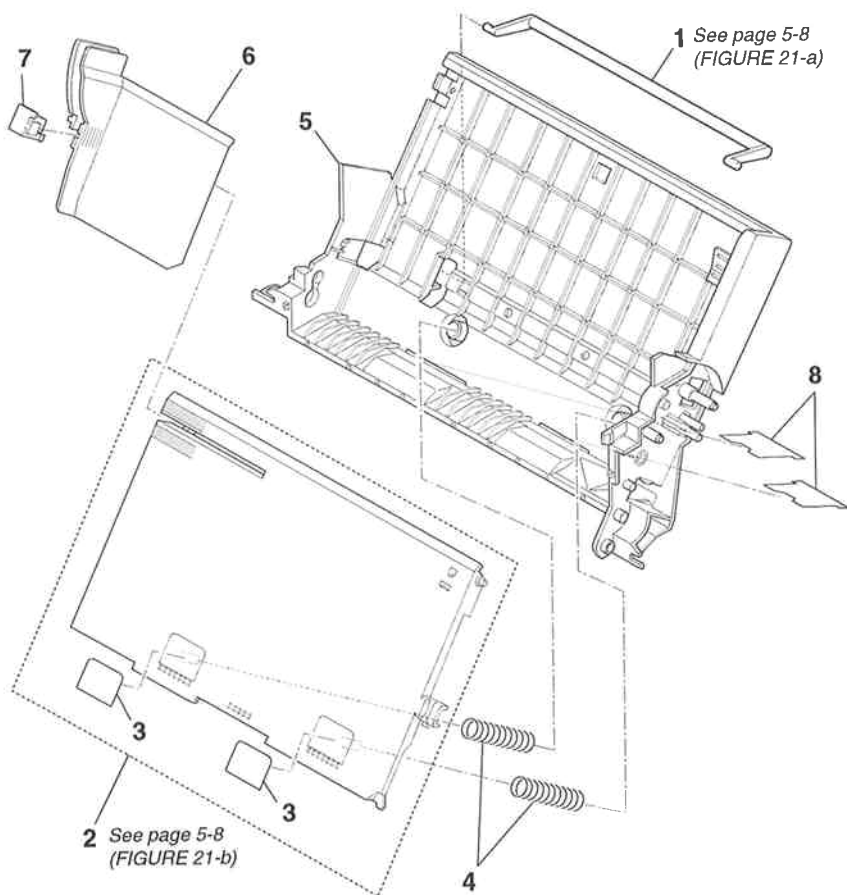
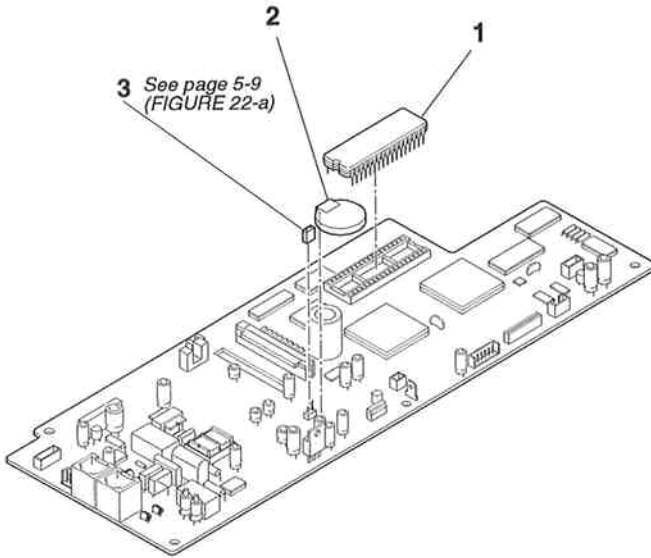
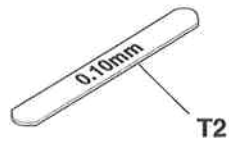
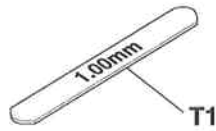


FIGURE 22 SCNT BOARD ASS'Y



3. TOOL

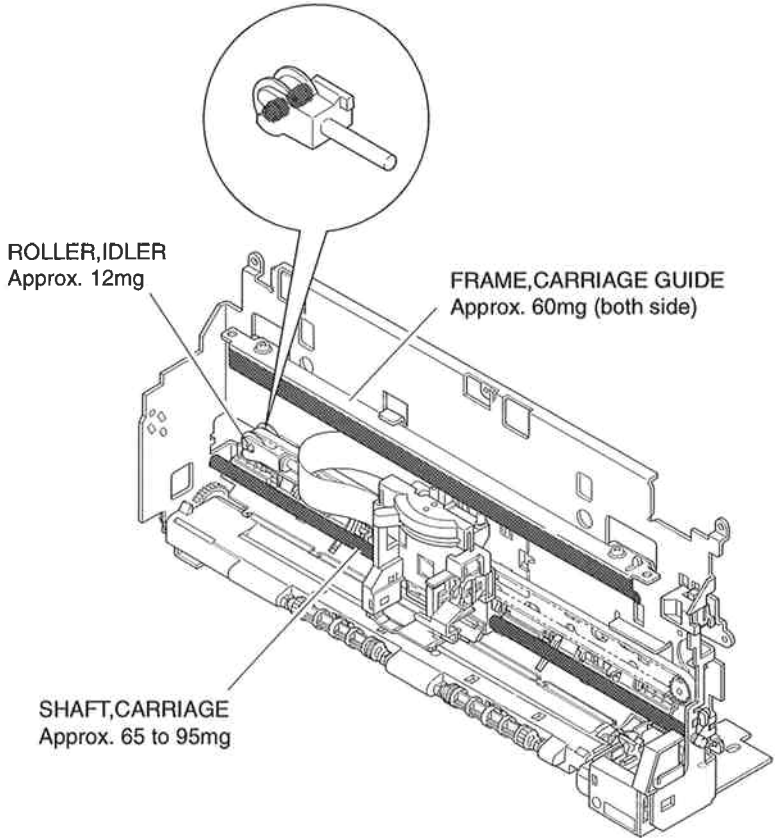
FIGURE 23 TOOLS



4. LUBRICATIONS

4.1 Locations

Some parts are lubricated with grease to ensure smooth operation and to increase conductivity. If lubricated parts are replaced or grease is removed, grease must be reapplied.



See FIGURE 12 and 17 for the assembly

This page intentionally left blank

5. GUIDE TO REPLACEMENT

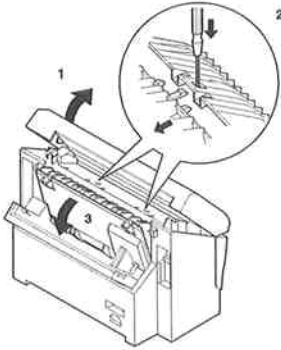
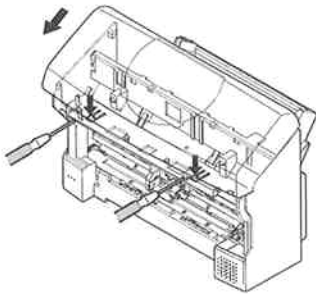
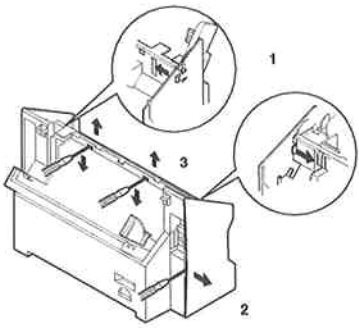
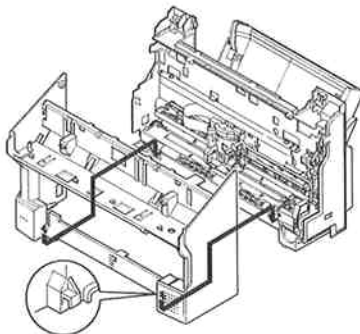
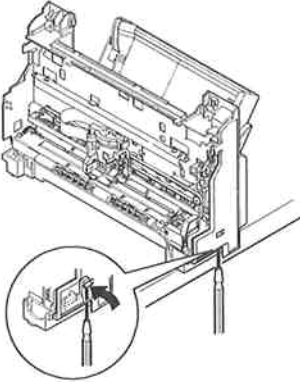
<p>FIGURE 2-a</p>	<p>See Page 2-3</p>	<p>FIGURE 2-b</p>	<p>See Page 2-3</p>
 <p>Diagram showing the scanner unit being opened. Step 1: The scanner unit is lifted. Step 2: A circular inset shows a screwdriver being used to pry the cover away from the scanner base unit. Step 3: The cover is being lifted away from the scanner base unit.</p>	<p>Open the scanner unit, and after removing the two screws that hold the "Cover, Logic Board" in place, insert a screwdriver, as shown at 2 in the illustration above, and prise the cover free from the tabs, and remove it. Pay attention when removing the cover so as to avoid trapping the flat cable inside.</p>	 <p>Diagram showing the scanner unit being removed from the scanner base unit. A screwdriver is used to break the tabs on the scanner base unit. Arrows indicate the direction to slide the scanner unit out.</p>	<p>When removing the SCANNER UNIT, insert a screwdriver into the holes at the right and left of the SCANNER BASE UNIT, and break the tabs. Then slide the Scanner Unit in the direction of the arrows.</p>
<p>FIGURE 3-a</p>	<p>See Page 2-5</p>	<p>FIGURE 3-b</p>	<p>See Page 2-5</p>
 <p>Diagram showing the main cover being removed. Step 1: A circular inset shows a screwdriver being used to pry the cover away from the scanner base unit. Step 2: The cover is being lifted away from the scanner base unit. Step 3: A circular inset shows a flat bladed screwdriver being used to remove the tabs at point 3.</p>	<p>When removing the COVER, MAIN (Front), 1 remove the tabs at the upper right and left, and insert a screwdriver, as illustrated above 2, so that the cover is prised loose, remove the tabs at point 3, with a flat bladed screwdriver.</p>	 <p>Diagram showing the main cover being attached to the scanner base unit. A circular inset shows a tab being clipped onto the lower cover unit.</p>	<p>When attaching the COVER, MAIN (Front), clip the tabs shown above on to the Lower Cover Unit.</p>

FIGURE 3-c

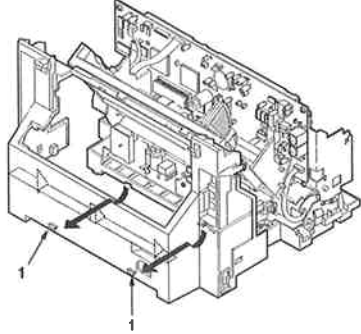
See Page
2-5



When removing the COVER, MAIN (Rear), place the machine at the edge of the work surface, and insert a screwdriver, as illustrated above, and remove the right and left tabs.

FIGURE 3-d

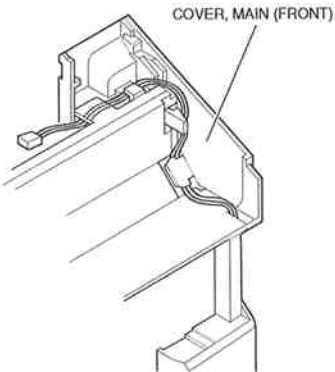
See Page
2-5



To remove the COVER, MAIN (Rear), insert your fingers into location 1, illustrated above, and lift up.

FIGURE 3-e

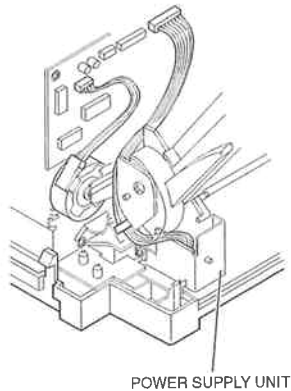
See Page
2-5



Thread the speaker cable as shown above.

FIGURE 4-a

See Page
2-7



Thread the cables for the POWER SUPPLY UNIT as shown above.

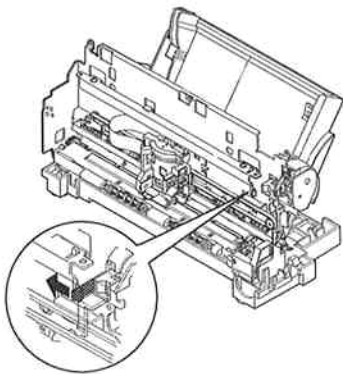
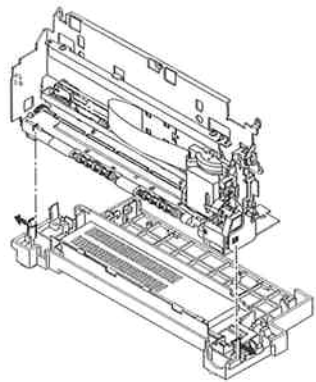
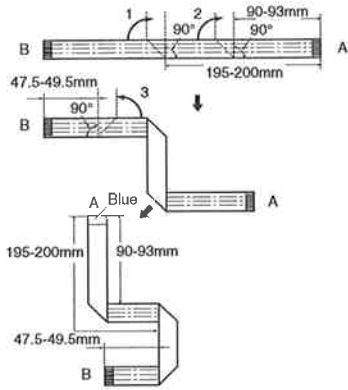
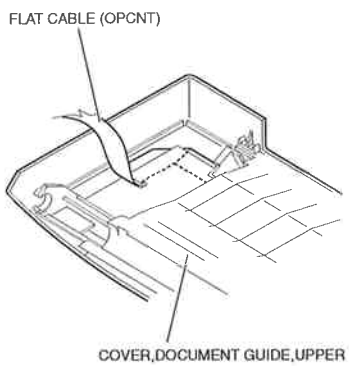
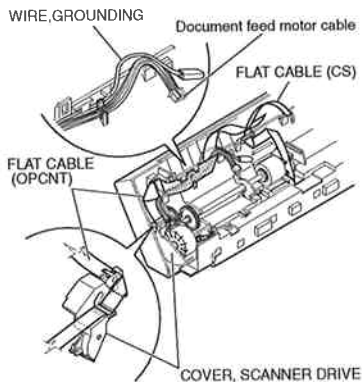
<p>FIGURE 4-b</p>	<p>See Page 2-7</p>	<p>FIGURE 5-a</p>	<p>See Page 2-9</p>
 <p>When removing the AUTO SHEET FEEDER ASS'Y, release the tabs holding the printer chassis.</p>		 <p>When removing the PRINTER ASS'Y, release the tabs at left and right, as shown above.</p>	
<p>FIGURE 7-a</p>	<p>See Page 2-13</p>	<p>FIGURE 7-b</p>	<p>See Page 2-13</p>
 <p>Bend the FLAT CABLE (OPCNT), as shown in the diagram.</p>		 <p>When attaching the COVER, DOCUMENT GUIDE, UPPER, feed the FLAT CABLE (OPCNT) as shown in the illustration.</p>	

FIGURE 7-c

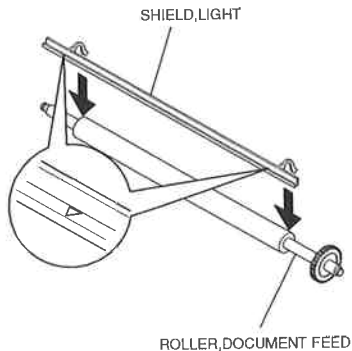
See Page
2-13/17/21



Arrange the cables of the SCANNER UNIT as shown in the illustration.

FIGURE 8-a

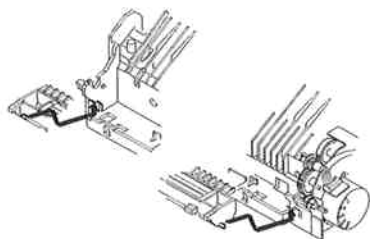
See Page
2-15



When attaching the SHIELD, LIGHT, fix so that the edge of the "V" mark is facing the centre of the main unit.

FIGURE 9-a

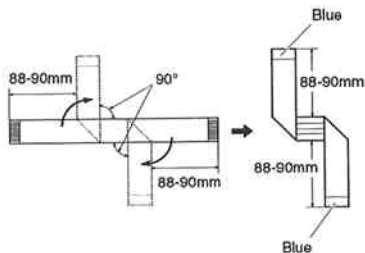
See Page
2-17



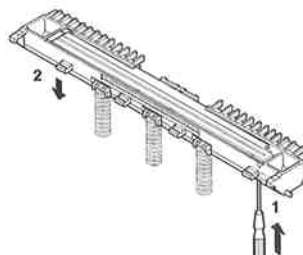
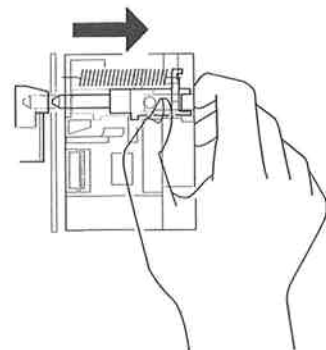
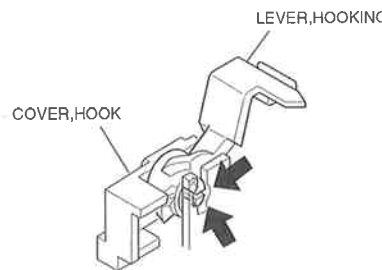
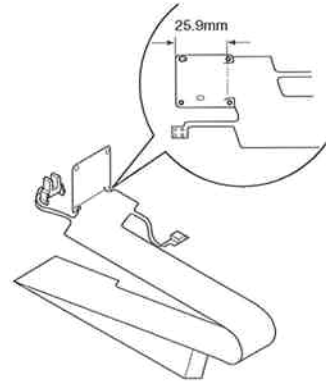
Attach the CONTACT SENSOR ASS'Y as shown in the diagram.

FIGURE 9-b

See Page
2-17



Fold the FLAT CABLE (CS) as shown in the diagram.

<p>FIGURE 9-c</p>	<p>See Page 2-17</p>	<p>FIGURE 12-a</p>	<p>See Page 2-23</p>
 <p>To remove the CONTACT SENSOR from the HOLDER, insert a flat bladed screw driver into location 1 (on the under side of the CS holder). Slip the screwdriver blade between the metal plate and the retaining clip, and press upward, as shown in the diagram. When attaching, slide the CONTACT SENSOR in location 2, and fit it in.</p>	 <p>When removing the purge unit, slide the pin to the right, as shown in the diagram.</p>		
<p>FIGURE 13-a</p>	<p>See Page 2-25</p>	<p>FIGURE 14-a</p>	<p>See Page 2-27</p>
 <p>When removing the COVER, HOOK bend the tabs in the direction of the arrows.</p>	 <p>Fold the CARRIAGE RIBBON CABLE ASS'Y as shown in the illustration.</p>		

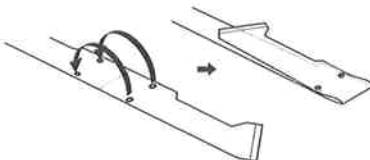
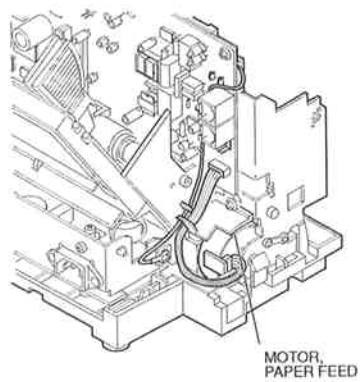
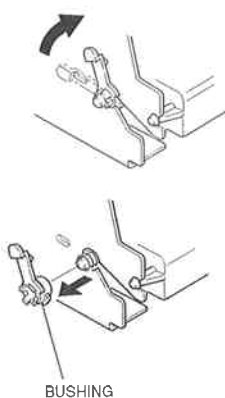
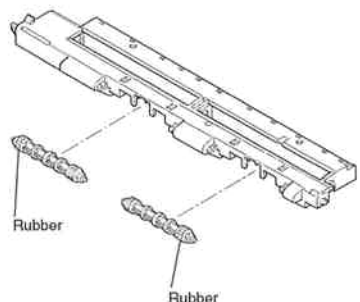
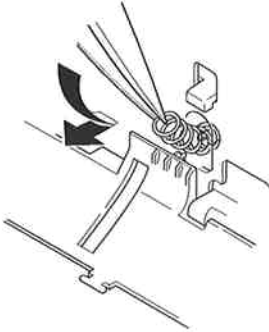
<p>FIGURE 14-b</p>	<p>See Page 2-27</p>	<p>FIGURE 15-a</p>	<p>See Page 2-29</p>
 <p>Fold the CARRIAGE RIBBON CABLE ASS'Y as shown in the illustration.</p>	 <p>Arrange the PULSE MOTOR, PAPER FEED as shown in the illustration above.</p>		
<p>FIGURE 16-a</p>	<p>See Page 2-31</p>	<p>FIGURE 16-b</p>	<p>See Page 2-31</p>
 <p>Rotate the BUSHING in the direction of the arrow, and break the tab.</p>	 <p>When attaching the PAPER EJECT ROLLER ASS'Y, attach as shown in the diagram, with the rubber facing outward.</p>		

FIGURE 17-a

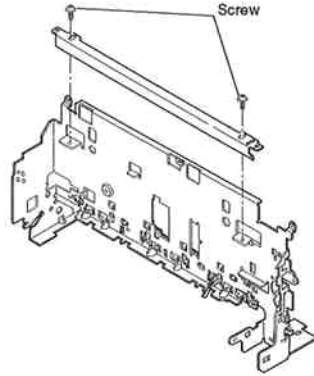
See Page
2-33



When attaching the SPRING, COIL, use tweezers to attach, as illustrated above.

FIGURE 17-b

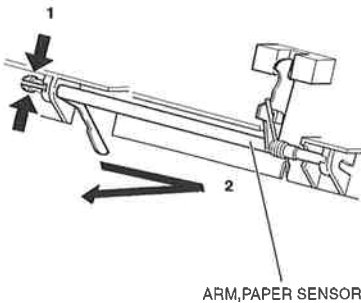
See Page
2-33



All these screws are loosened, head gap adjustment will be required.

FIGURE 18-a

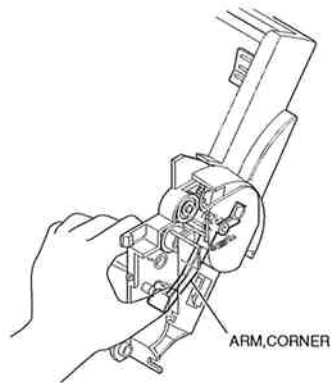
See Page
2-35



When removing the ARM, PAPER SENSOR, push in the direction of the arrow 1, and move in the direction of the arrow 2.

FIGURE 19-a

See Page
2-37



When removing the screw at Key No. 10, press down on the ARM, CORNER.

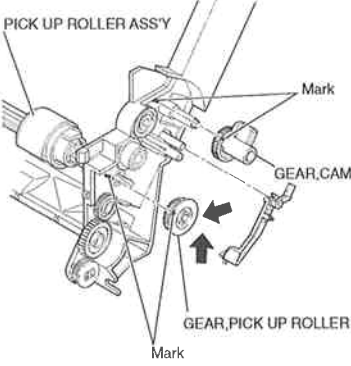
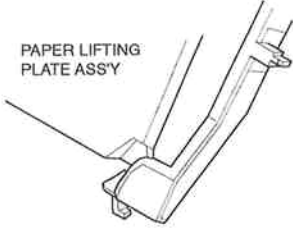
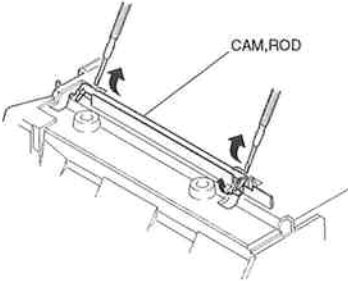
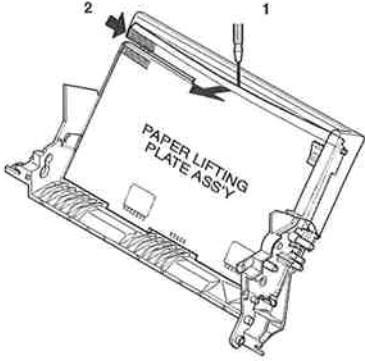
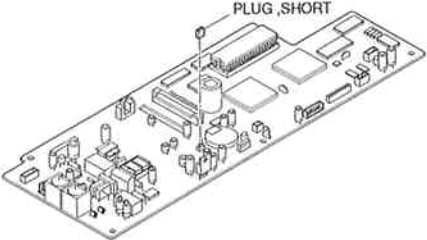
<p>FIGURE 19-b</p>	<p>See Page 2-37/39</p>	<p>FIGURE 20-a</p>	<p>See Page 2-39</p>
 <p>PICK UP ROLLER ASS'Y</p> <p>Mark</p> <p>GEAR,CAM</p> <p>GEAR,PICK UP ROLLER</p> <p>Mark</p> <p>When removing the PICK UP ROLLER ASS'Y, bend the tabs in the direction of the arrows. Make sure that the GEAR, CAM and GEAR, PICKUP ROLLER are attached so that the marks line up.</p>		 <p>PAPER LIFTING PLATE ASS'Y</p> <p>Attach the corner arm so that the end tab is on top of the PAPER LIFTING ASS'Y.</p>	
<p>FIGURE 21-a</p>	<p>See Page 2-41</p>	<p>FIGURE 21-b</p>	<p>See Page 2-41</p>
 <p>CAM,ROD</p> <p>When removing the CAM, ROD, remove as shown in the diagram.</p>		 <p>2</p> <p>1</p> <p>PAPER LIFTING PLATE ASS'Y</p> <p>When removing the PAPER LIFTING PLATE ASS'Y, insert a flat bladed screwdriver into location 1, and free the boss 2 from the FRAME, ASF.</p>	

FIGURE 22-a

See Page
2-43



The SCNT BOARD ASS'Y does not have a PLUG, SHORT attached.

This page intentionally left blank

6. NUMERICAL INDEX

PART NUMBER	FIGURE & KEY No.	DESCRIPTION	PART NUMBER	FIGURE & KEY No.	DESCRIPTION
HB1-0322-000	10 - 5	LABEL, UPPER LIMIT	HF5-0140-020	6 - 9	SEPARATION GUIDE UNIT
HB1-1191-070	2 - 1	COVER, LOGIC BOARD	HF5-0299-030	1 - 2	PAPER TRAY
HB1-1199-000	6 - 3	COVER, DOCUMENT GUIDE, UPPER	HG1-4335-000	4 - 3	SCNT BOARD ASS'Y
HB1-1200-000	6 - 1	BELT, STOPPER	HG5-0410-030	8 - 2	SEPARATION ROLLER ASS'Y
HB1-1203-000	8 - 4	SHIELD, LIGHT	HG5-0412-030	8 - 5	DOCUMENT FEED ROLLER ASS'Y
HB1-1204-000	8 - 3	COVER, SCANNER DRIVE	HG5-0423-030	14 - 5	CARRIAGE RIBBON CABLE ASSY
HB1-1205-000	9 - 3	PLATE, POSITIONING, CS HOLDER	HG5-0427-090	4 - 2	AUTO SHEET FEEDER ASS'Y
HB1-1206-060	9 - 1	COVER, DOCUMENT GUIDE, LOWER	HG5-0432-020	19 - 3	PAPER PICKUP ROLLER ASS'Y
HB1-1207-000	8 - 1	ARM, DETECTION (DES)	HG5-0433-000	16 - 4	PAPER EJECT ROLLER ASS'Y
HB1-1208-000	9 - 2	SPRING, LEAF	HG5-0771-020	6 - 5	SEPARATION GUIDE ASS'Y
HB1-1210-020	8 - 8	CLUTCH	HG5-1187-020	1 - 3	PAPER TRAY COVER
HB1-1212-040	9 - 8	HOLDER, CONTACT SENSOR	HG5-1190-040	2 - 4	FRONT COVER ASS'Y
HB1-1214-000	8 - 12	CLUTCH	HG5-1208-020	12 - 8	CARRIAGE ASS'Y
HB1-1219-000	11 - 7	PLATE, GROUNDING	HG5-2147-000	5 - 1	PRINT ASS'Y
HB1-1224-000	3 - 4	PLATE, SPEAKER MOUNTING	HH2-2450-000	9 - 7	FLAT CABLE
HB1-1231-060	13 - 7	HOLDER, CARRIAGE RIBBON CABLE	HH2-2494-000	9 - 6	WIRE, GROUNDING
HB1-1232-000	12 - 9	SHAFT, CARRIAGE	HH2-2495-000	11 - 6	WIRE, GROUNDING
HB1-1233-000	17 - 3	PLATE, PRESSURE	HH2-2720-000	7 - 2	FLAT CABLE
HB1-1235-000	18 - 4	GUIDE, PRESSURE PLATE	HH2-2824-000	1 - 5	MODULAR CORD, 2P
HB1-1236-000	14 - 1	GUIDE, RIBBON CABLE	HH3-5340-000	4 - 1	POWER SUPPLY UNIT
HB1-1237-000	13 - 5	COVER, CARRIAGE TOP	HH4-3267-000	22 - 1	IC, LH538B, MASK-ROM
HB1-1238-000	14 - 8	LEVER, FORMS THICKNESS	HH7-2092-000	9 - 11	CONTACT SENSOR UNIT
HB1-1239-000	14 - 7	CAM, TENSION	HH7-2093-000	11 - 1	PULSE MOTOR, DOCUMENT FEED
HB1-1240-000	14 - 10	PLATE, POSITIONING, INK SENSOR	HH7-2259-000	3 - 5	SPEAKER
HB1-1241-000	14 - 4	BASE, CARRIAGE	HH7-2370-000	7 - 1	OPERATION PANEL UNIT
HB1-1242-000	16 - 3	PLATEN	HS5-0119-030	8 - 6	GEAR WITH ONEWAY CLUTCH, 39T
HB1-1246-090	21 - 5	FRAME, CUT SHEET FEEDER	HS5-0120-000	8 - 11	GEAR, 52T
HB1-1247-040	19 - 1	COVER, LEVER GUIDE	HS5-0121-000	11 - 4	GEAR, 52T
HB1-1248-060	21 - 6	GUIDE, PAPER	HS5-0122-000	11 - 3	GEAR, 51/17T
HB1-1254-000	6 - 8	SPRING, LEAF, GUIDE	HS5-0123-000	11 - 5	GEAR, 50T
HB1-1255-000	6 - 7	SHEET, SEPARATION GUIDE	HS5-0124-000	11 - 2	GEAR, 17T
HB1-1256-040	3 - 3	COVER, INTERFACE CONNECTOR	HS5-1028-000	8 - 7	BUSHING
HB1-1257-040	21 - 7	STOPPER, PAPER GUIDE	HS5-1029-000	8 - 10	BUSHING
HB1-1259-020	2 - 7	LABEL, CARTRIDGE	HS5-2041-000	6 - 4	SPRING, COIL
HB1-1263-000	13 - 2	LEVER, HOOKING	HS5-2117-000	9 - 5	SPRING, COIL
HB1-1265-030	10 - 4	LABEL, PAPER LOADING	HS5-9003-000	17 - 5	SCREW, BH(RED) M3X4
HB1-1285-060	3 - 1	COVER, MAIN (FRONT)	HS5-9005-000	9 - 9	SCREW, M2.6X3.5
HB1-1286-030	3 - 2	COVER, MAIN (REAR)	HT1-2131-000	1 - 1	USER'S GUIDE (ENG)
HB1-1287-000	21 - 8	SHEET, STOPPER	HY9-0002-000	23 - T 1	GAUGE, GAP (1MM)
HB1-1464-000	8 - 9	ROLLER, SEPARATION	HY9-0003-000	23 - T 2	GAUGE, GAP (0.1MM)
HB1-2164-000	10 - 3	SPRING, LEAF	QB1-0404-000	17 - 1	FRAME, CARRIAGE GUIDE
HB1-2193-020	5 - 7	ABSORBER, WASTE INK	QB1-0406-000	12 - 7	GUIDE, CORNER
HB1-2810-020	10 - 2	GUIDE, DOCUMENT	QB1-0410-000	17 - 2	SPRING, COIL
HB1-2811-020	10 - 1	TRAY, DOCUMENT, EXTENSION	QB1-0411-000	18 - 3	ARM, PAPER SENSOR
HB1-2817-000	9 - 15	ELIMINATOR, STATIC-CHARGE	QB1-0412-000	18 - 2	SPRING, TORSION
HB1-3068-000	21 - 1	CAM, ROD	QB1-0413-000	18 - 1	ARM, SENSOR
HB1-4219-000	7 - 4	ARM, DETECTION (DS)	QB1-0417-000	16 - 1	BUSHING
HB1-4220-000	7 - 3	HOLDER, DETECTION ARM	QB1-0419-000	16 - 7	SHAFT, ROLLER
HB1-4221-000	7 - 5	SHEET, ONE-TOUCH	QB1-0420-000	16 - 13	ARM, TRANSMISSION
HF5-0105-000	11 - 8	PLATE, SCANNER DRIVE	QB1-0421-000	16 - 11	SPRING, COIL
HF5-0106-000	16 - 8	ROLLER, PAPER FEED	QB1-0422-000	16 - 9	BUSHING
HF5-0107-000	21 - 2	PAPER LIFTING PLATE ASS'Y	QB1-0423-000	16 - 2	SPRING, COIL
HF5-0108-020	5 - 5	LOWER COVER UNIT	QB1-0425-000	16 - 12	GEAR, TRANSMISSION

PART NUMBER	FIGURE & KEY No.	DESCRIPTION	PART NUMBER	FIGURE & KEY No.	DESCRIPTION
QB1-0428-000	16 - 6	ROLLER, TRANSMISSION	XB4-7200-609	6 - 11	SCREW, M2X6
QB1-0429-030	16 - 5	RING, RUBBER	XB4-7300-609	12 - 10	SCREW, TAP, BINDING HEAD, M3X6
QB1-0433-000	19 - 7	PAPER, GUIDE	XB4-7300-807	3 - 6	SCREW, TAP TIGHT, BINDING HEAD
QB1-0436-000	14 - 3	PAD, CONTACT		9 - 14	
QB1-0438-000	13 - 4	HOOK, CARRIAGE		19 - 10	
QB1-0439-000	13 - 3	SPRING, COIL	XB4-7301-009	2 - 2	SCREW, BINDING HEAD M3X10
QB1-0440-020	13 - 1	COVER, HOOK		6 - 12	
QB1-0441-000	14 - 2	HOLDER, RIBBON CABLE (UPPER)		9 - 12	
QB1-0446-000	14 - 9	SPRING, TORSION	XB6-7300-407	4 - 4	SCREW, TP, PH M3X4
QB1-0449-000	14 - 6	SPRING, HOOK END COIL	XD2-1100-502	8 - 13	RETAINING RING (E-TYPE)
QB1-0467-000	12 - 2	SPRING, HOOK END COIL			
QB1-0475-000	20 - 3	ARM, CORNER			
QB1-0476-000	20 - 1	LEVER, PAPER SELECTION			
QB1-0477-000	20 - 5	GEAR, CAM			
QB1-0478-000	19 - 2	GEAR, PICKUP ROLLER			
QB1-0479-000	19 - 6	GEAR, TRANSMISSION			
QB1-0480-000	19 - 5	GEAR, TRANSMISSION			
QB1-0482-000	20 - 7	SPRING, ONE WAY CLUTCH			
QB1-0483-000	20 - 8	GEAR, ONE WAY CLUTCH			
QB1-0484-000	20 - 6	GEAR, TRANSMISSION			
QB1-0485-000	19 - 4	GEAR, TRANSMISSION			
QB1-0489-000	20 - 4	SPRING, COIL			
QB1-0490-000	20 - 2	COIL, SPRING HOOK END			
QB1-0491-000	21 - 4	SPRING, COIL			
QB1-0493-000	21 - 3	SHEET, FRICTION			
QB1-0495-000	19 - 8	ROLLER, SLIP			
QB1-0496-000	19 - 9	RING, RUBBER, PICK-UP			
QB1-0499-000	12 - 6	CLIP, SHAFT			
QB1-0500-000	15 - 2	GEAR, SLOW DOWN			
QB1-0501-020	12 - 3	ROLLER, IDLER			
QB1-0502-000	12 - 4	BRACKET, IDLER			
QB1-0503-000	12 - 5	SPRING, COIL			
QB1-0507-000	5 - 6	FOOT, PRINTER			
QB1-0508-000	5 - 4	COVER, WASTE INK ABSORBER			
QB1-0509-000	5 - 2	ABSORBER, WASTE INK			
QB1-0510-000	5 - 3	ABSORBER, WASTE INK			
QB1-0517-000	2 - 5	SPUR			
QB1-0518-000	2 - 6	SPUR SHAFT			
QB1-0622-000	16 - 14	WASHER, PLAIN			
QB1-0684-000	17 - 4	ROLLER, PRESSURE			
QB1-1260-000	13 - 6	BELT, CARRIAGE			
QG5-0671-000	12 - 1	PURGE UNIT			
QH4-4112-000	15 - 1	MOTOR, CARRIAGE			
QH4-4114-000	15 - 3	MOTOR, PAPER FEED			
TKC-0953-000	23 - T 3	GREASE, FLOIL G311S (20GS)			
WK1-5047-000	22 - 2	LITHIUM BATTERY, CR2450HC22NC			
WT1-5472-000	22 - 3	PLUG, SHORT			
WT3-5021-000	1 - 4	CORD, POWER			
XA9-0476-000	6 - 10	SCREW, TP M3X8			
XA9-0613-000	16 - 10	NUT, SUS			
XB1-2300-407	9 - 13	SCREW, BH3X4 (S)			
	11 - 9				
	15 - 4				

This page intentionally left blank



Printed on paper that
contains 60% reused paper.

Canon